

# PRODUCT INFORMATION PACKET



Model No: 132205.00  
Catalog No: 132205.00  
7.50 HP Washdown Motor, 3 phase, 3600 RPM, 230/460 V, 184TC Frame, TEFC  
White Epoxy General Purpose Motors



Regal and Leeson are trademarks of Regal Beloit Corporation or one of its affiliated companies.  
©2020 Regal Beloit Corporation, All Rights Reserved. MC017097E

The Regal logo is located in the bottom right corner. It features the word "REGAL" in a white, bold, sans-serif font, set against a dark grey rectangular background with a slight shadow effect.



**Nameplate Specifications**

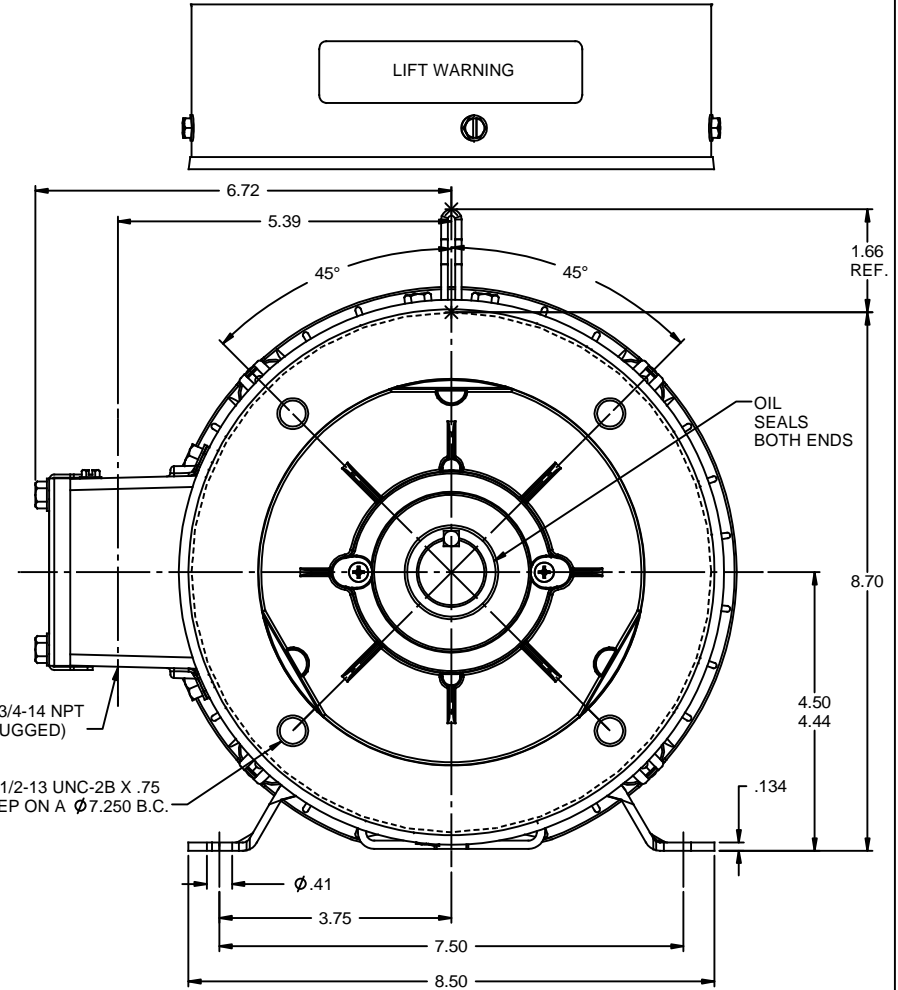
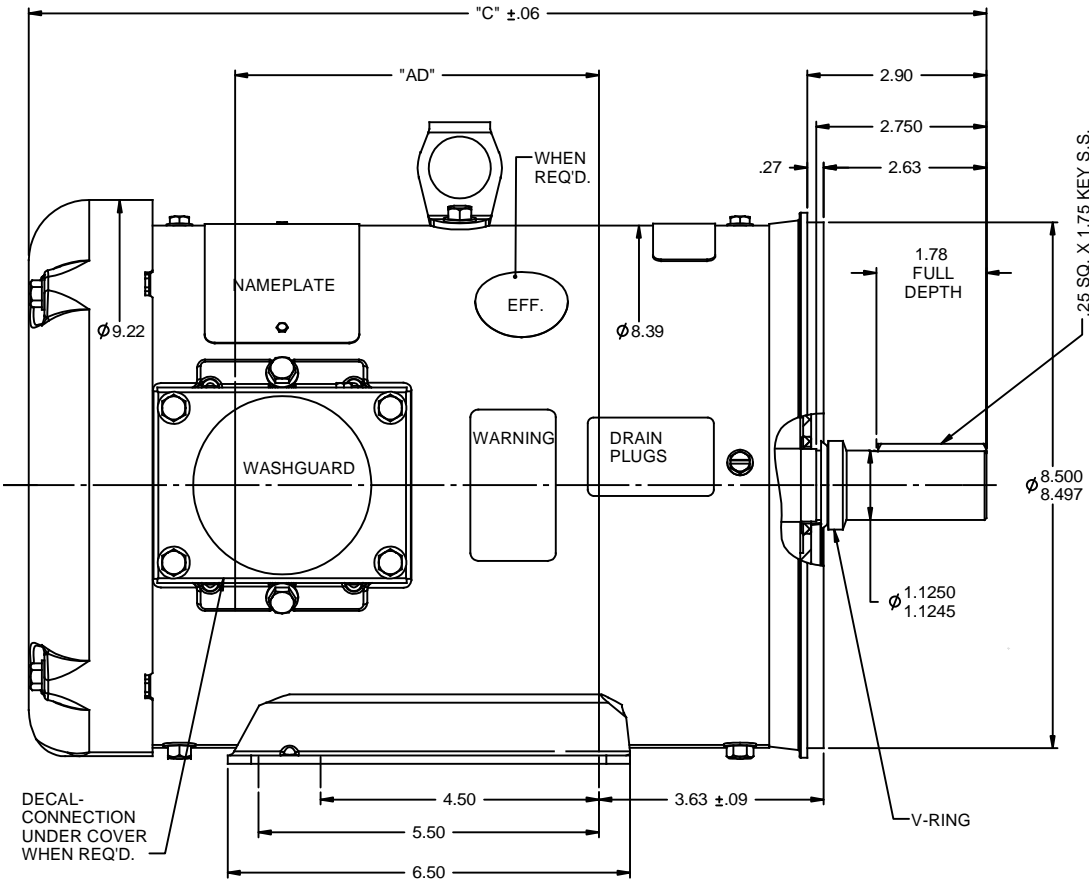
|                        |            |                            |                             |
|------------------------|------------|----------------------------|-----------------------------|
| Output HP              | 7.50 Hp    | Output KW                  | 5.6 kW                      |
| Frequency              | 60 Hz      | Voltage                    | 230/460 V                   |
| Current                | 17.6/8.8 A | Speed                      | 3500 rpm                    |
| Service Factor         | 1.15       | Phase                      | 3                           |
| Efficiency             | 89.5 %     | Power Factor               | 88.5                        |
| Duty                   | Continuous | Insulation Class           | F                           |
| Design Code            | A          | KVA Code                   | L                           |
| Frame                  | 184TC      | Enclosure                  | Totally Enclosed Fan Cooled |
| Thermal Protection     | No         | Ambient Temperature        | 40 °C                       |
| Drive End Bearing Size | 6207       | Opp Drive End Bearing Size | 6205                        |
| UL                     | Recognized | CSA                        | Y                           |
| CE                     | Y          | IP Code                    | 55                          |

**Technical Specifications**

|                       |                             |                       |                 |
|-----------------------|-----------------------------|-----------------------|-----------------|
| Electrical Type       | Squirrel Cage Induction Run | Starting Method       | Across The Line |
| Poles                 | 2                           | Rotation              | Reversible      |
| Resistance Main       | 1.3 Ohms                    | Mounting              | Rigid base      |
| Motor Orientation     | Horizontal                  | Drive End Bearing     | Ball            |
| Opp Drive End Bearing | Ball                        | Frame Material        | Rolled Steel    |
| Shaft Type            | T                           | Overall Length        | 15.97 in        |
| Frame Length          | 10.50 in                    | Shaft Diameter        | 1.125 in        |
| Shaft Extension       | 2.75 in                     | Assembly/Box Mounting | F1/F2 CAPABLE   |
| Outline Drawing       | 035462-1050                 | Connection Drawing    | 005010.01       |

This is an uncontrolled document once printed or downloaded and is subject to change without notice. Date Created:20/05/2020

RBC PROPRIETARY AND CONFIDENTIAL INFORMATION  
 This document is the property of REGAL BELOIT CORPORATION ("RBC") including its subsidiaries and divisions and contains proprietary information of RBC. This document is loaned on the express condition that neither it nor the information contained therein shall be disclosed to others without the express written consent of RBC, and that the information shall be used by the recipient only as approved expressly by RBC. This document shall be returned to RBC upon its request. This document may be subject to certain restrictions under U.S. export control laws and regulations.



**SPECIAL FEATURES:**  
 SHAFT SEALS & V-RING  
 DRAIN HOLES IN FRAME & CONDUIT BOX  
 STAINLESS STEEL SHAFT, HARDWARE & NAMEPLATE  
 GASKETS THROUGHOUT

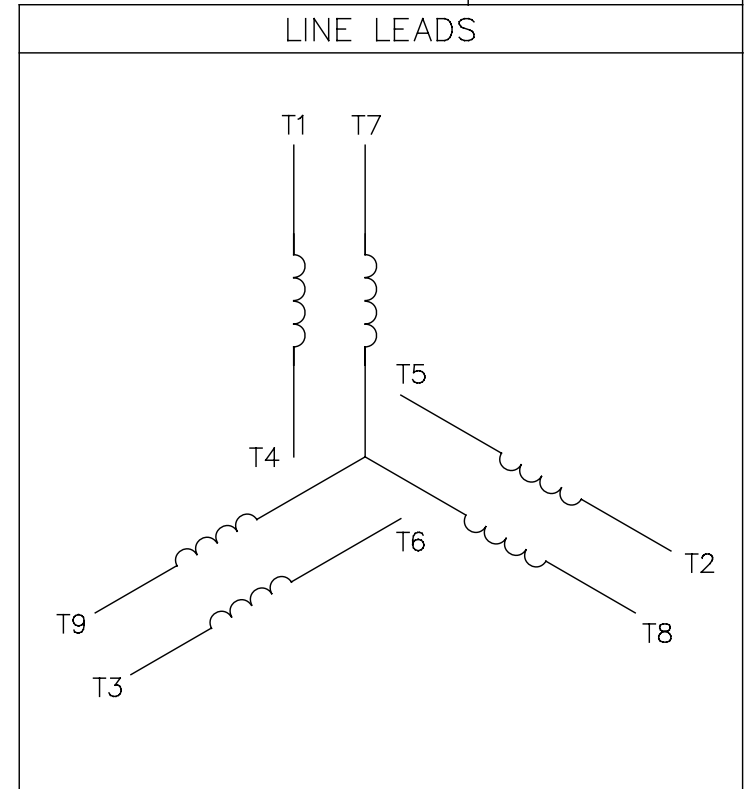
MAXIMUM FACE RUNOUT TO BE .004 T.I.R.  
 MAXIMUM PILOT ECCENTRICITY TO BE .004 T.I.R.  
 PERMISSIBLE SHAFT RUNOUT TO BE .002 T.I.R.

| DASH NO. | "C"   | "AD" |
|----------|-------|------|
| 900      | 14.47 | 4.87 |
| 950      | 14.97 | 5.37 |
| 1000     | 15.47 | 5.87 |
| 1050     | 15.97 | 6.37 |
| 1100     | 16.47 | 6.87 |
| 1150     | 16.97 | 7.37 |

| REVISION |                                 | BY & DATE      | CHK | ANG  | FINISH | REV | SIZE | DRAWING NO | REV |
|----------|---------------------------------|----------------|-----|------|--------|-----|------|------------|-----|
| 04       | UPDATED PER ISAAC 11-0758       | LST 2/17/2011  | XX  | XX   | ±.03   |     | B    | 035462     | 04  |
| 03       | UPDATED PER ISAAC 10-0580       | LST 5/12/2010  | XX  | XXX  | ±.005  |     |      |            |     |
| -        | UPDATED & REDRAWN IN SOLIDWORKS | LST 11/17/2008 | XX  | XXXX | ±.0005 |     |      |            |     |

005010-01

VIEW FROM OUTSIDE OF MOTOR AT SWITCH END.



| VOLTAGE | L1    | L2    | L3    | JOIN & INSULATE               |
|---------|-------|-------|-------|-------------------------------|
| HIGH    | T1    | T2    | T3    | (T4,T7)<br>(T5,T8)<br>(T6,T9) |
| LOW     | T1,T7 | T2,T8 | T3,T9 | T4,T5,T6                      |

|  |                       |  |  |                                |          |  |          |                    |                       |           |             |      |
|--|-----------------------|--|--|--------------------------------|----------|--|----------|--------------------|-----------------------|-----------|-------------|------|
|  |                       |  |  | TOLERANCES<br>UNLESS SPECIFIED |          | <b>REGAL</b> ™ <b>Regal Beloit America, Inc.</b> |          | DRAWN RDW 04/12/02 |                       |           |             |      |
|  |                       |  |  | DEC.                           | INCHES   |  |          | CHK                |                       |           |             |      |
|  |                       |  |  | .X                             | ±.1      |  |          | APPD               |                       |           |             |      |
|  |                       |  |  | .XX                            | ±.01     |  |          | SCALE 1=1          |                       |           |             |      |
|  |                       |  |  | .XXX                           | ±.005    | TITLE  |          | REF FIG.2-51       |                       |           |             |      |
| A  | UPDATED TO REGAL LOGO |  |  | SAJ                            | 06/26/15 | AJY  | .XXXX    | ±.0005             | MAT'L. DECAL - 004014 | FMF       |             |      |
| NO.  | REVISION              |  |  | BY & DATE                      | CHK      | ANG  | ±1/2"    | FINISH             | PREV                  |           |             |      |
| THIS DRAWING IN DESIGN AND DETAIL IS OUR PROPERTY AND MUST NOT BE USED EXCEPT IN CONNECTION WITH OUR WORK ALL RIGHTS OF DESIGN AND INVENTION ARE RESERVED THIS IS AN ELECTRONICALLY GENERATED DOCUMENT - DO NOT SCALE THIS PRINT |                       |  |  | RFP                            | 04/12/02 |  | CAD FILE | 00501001           |                       | SIZE      | DRAWING NO. | REV. |
|  |                       |  |  | DIST                           | BRF-NLV  |  |          |                    | A                     | 005010-01 |             | A    |